

Introduction

The Economic Intelligence Data Application (E-IDA) is a web based database framework for gathering and monitoring economic indicators and programmes based on the work done by KRIM Network Sdn. Bhd. (KRIM) for the Malaysian Ministry of Finance and the Terengganu State Government.

E-IDA started off as a pilot project under the Malaysian Prime Minister's Department for the Ministry of Finance. At present, it has 86 users from the Economic and International Division of the Malaysian Ministry of Finance for monitoring 2,743 economic indicators from 1,098 economic entities.

The E-IDA feature was further expanded for the Terengganu State Government to include data related to the progress and participation of 144 programmes and 348 projects implemented by the various agencies under the State. It allows the State to assess the impact and benefits of these investment across geographical and sectoral classifications.



E-IDA Objectives

Economic Intelligence Cycle

Economic database which implements the intelligence cycle processes of direction, collection, processing, analysis, and reporting.

Monitoring Efficiency

How much government expenditure are spent ?

Who receives government expenditure and does what ?

Which sectors and geographies receives government expenditure ?

Monitoring Effectiveness

What is the impact on the industry and society ?

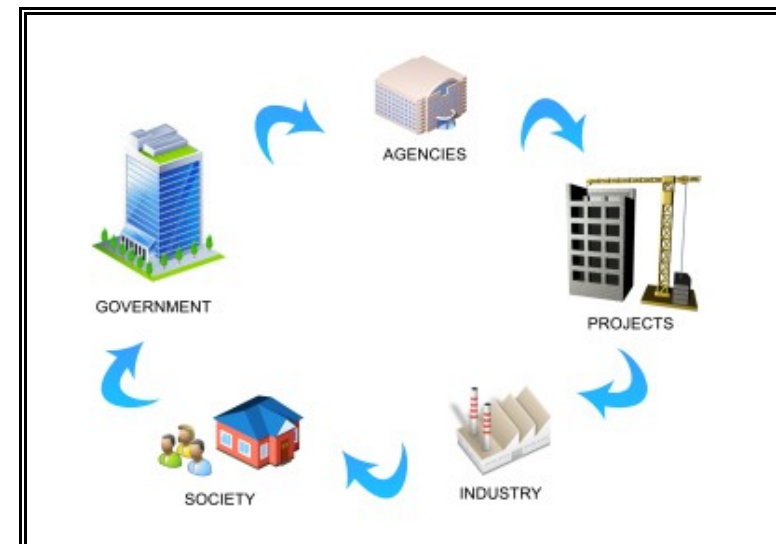
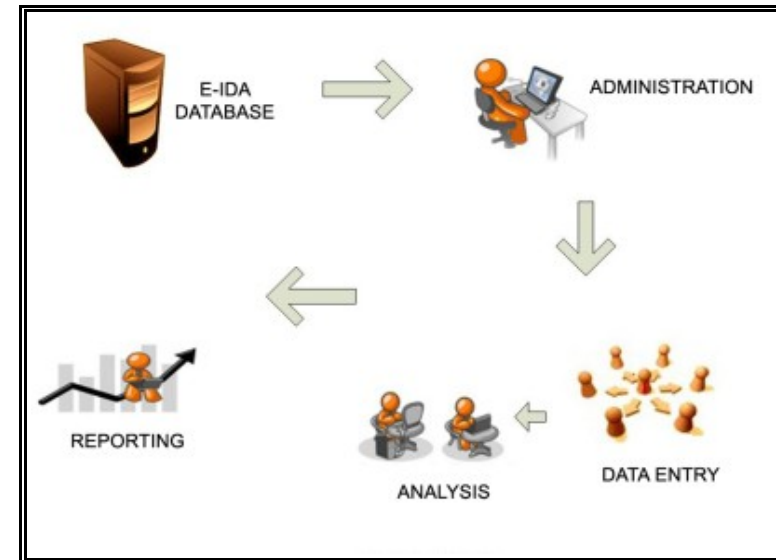
Why government strategies can influence the household, firms and economic cycles ?

User Friendly

No programming skills required to use

Click-and-select user interface

Dynamic to support many users and uses



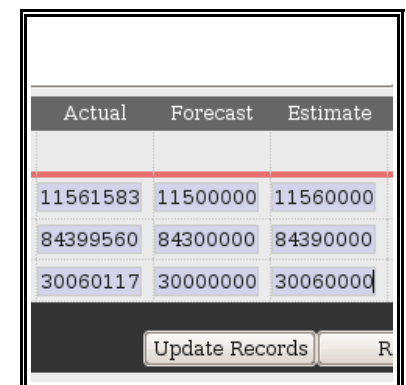
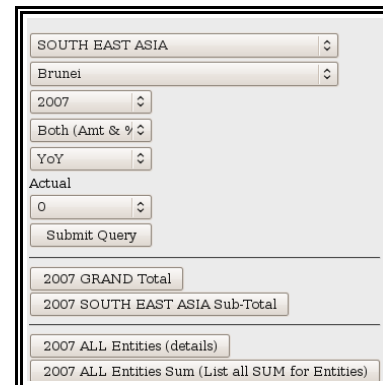
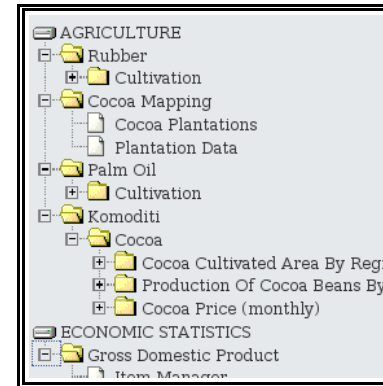
E-IDA Features for Gathering Information

Administration

- Unlimited levels of sectors and sub-sector datasets
- Time-series based on month, quarter, half-year and year
- Unlimited number of portfolios, programmes and projects
- Unlimited levels of main groups, sub-groups and items
- Unlimited number of entities and sub-entities
- Unlimited number of users, groups and permissions
- Unlimited number of online news sources and documents

Data Entry

- Budget vs actual expenditure according to entity, project and item
- Forecast, estimate vs actual economic indicators according to entity, project and item
- Planned vs actual physical progress dates and percentages according to entity, project and activity



E-IDA Features for Analysing Information

Analysis

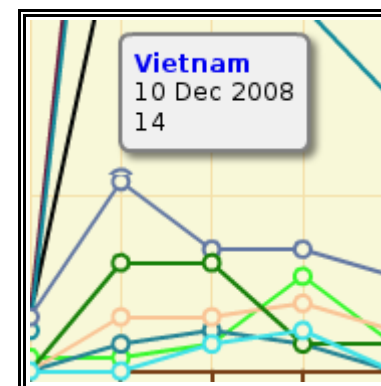
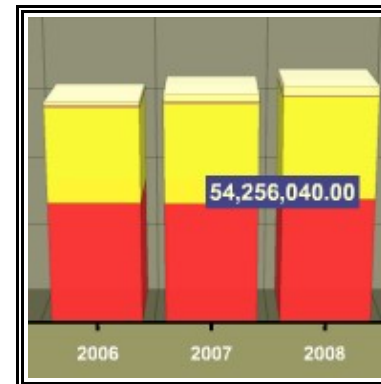
- Automated calculation of group and sub-groups totals whether none, sum, or weighted index
- Automated calculation of time-series cumulatives based on sum, average, or balance methods
- Automated calculation for entity and sub-entities consolidation
- Automated calculation for user defined formulas on items for addition, subtraction, multiplication, division, sum, average, minimum, maximum, median
- Unlimited number of advanced query on free form live grids using multiple datasets

Reporting

- 20 pre-defined template reports in table, bar chart, stacked bar, share pie chart, growth line chart, and spreadsheet formats
- Personalised real-time dashboards combining table, chart and mapping widgets

ACTUAL Year 2005		ACTUAL Year 2006	
Amt	Yoy%	Amt	Yoy%
9,531,403,264	21	11,561,583,616	21
96,314,033	21	115,615,836	21
6,862,610,350	28	8,439,956,040	23
2,573,478,881	5	3,006,011,740	17

Bil Projek	Peruntukan Tahunan (RM)
5	17,150,000.00
6	39,450,010.00
2	102,500,000.00
0	0.00
4	2,100,000.00



About KRIM Network Sdn Bhd

Corporate Profile

- Malaysian MSC Status Company
- Incorporated since 1995
- MYR 1.5 million paid-up share capital
- 500 employees in the group of companies
- Group principal business
 - Software Application
 - Information Technology
 - 3D Multimedia Services
 - Renewable Solar Energy
 - Training and Consultancy

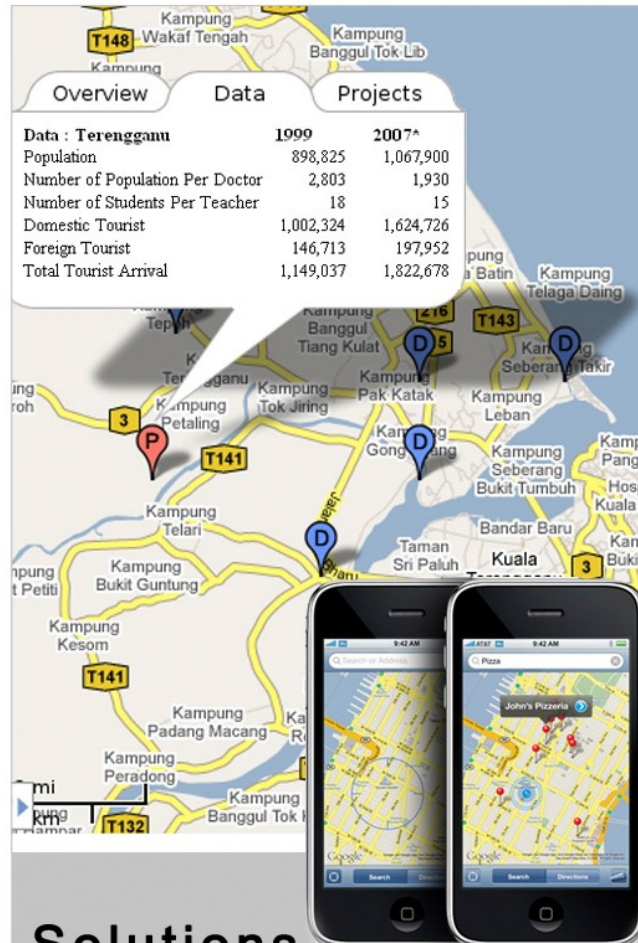
Software Application Portfolio

- Economic Intelligence Database System for the Malaysian Ministry of Finance
- Electronic Programme Monitoring System for Terengganu State Economic Planning Unit
- Electronic Pihak Berkuasa Tempatan for Terengganu State Local Municipals
- eKemiskinan for Terengganu State Economic Planning Unit
- eMunakahat for Terengganu Religious Affairs Department
- eAduan for Terengganu State Government
- GuruMAS for Terengganu Islamic Foundation
- K-Man Profiling System for the Central Terengganu Development Authority
- Siscom for Terengganu State Information Management Unit
- Web Portals for KRIM, Ketengah, Solartif, Warisan Ilmu, etc
- KRIM Network Support System for KRIM internal operations
- KRIM Sistem Tempahan Kenderaan for KRIM internal operations
- KRIM eOffice for KRIM internal operations



Products

- web site
- web intelligence data
- web enterprise information
- e-book



Solutions

- dashboard
- charts
- maps
- mobile



Services

- consulting
- design
- training
- support

